

**LONE STAR T'S
OKLAHOMA REVISITED -- 2006 SPRING TOUR
Day 3 – Sunday, May 6**

Lake Texoma Resort Park to Texas and Home

Leave 9:00 from parking lot

Tour notes-

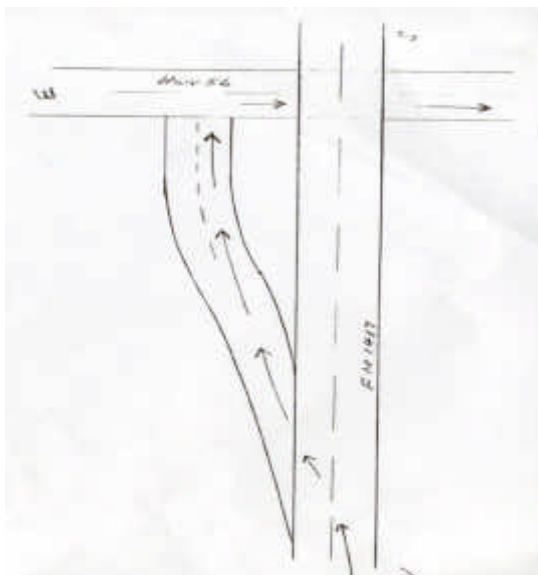
- Use 2 or even 3 lanes going through stoplights where permitted**
- Space out on 2 lane roads with no shoulder - let moderns pass**
- Keep car behind you in sight - especially at poorly marked turns**
- Sodas and water are available on trouble truck at rest stops**

<u>Cumm Mileage</u>	<u>Interval Mileage</u>	
0.0	0.0	Follow the leader RT from parking lot
0.1	0.1	RT on US 70 east
7.6	7.5	RT on Leavenworth Rd south
13.5	5.9	RT on Platter Rd
15.5	2.0	LFT on Platter Dike Rd Becomes Sand Creek Rd
17.8	2.3	RT on Vernon Rd
18.8	1.0	LFT at 'T' Willifa Woods Rd
20.7	1.9	LFT on Boat Club Rd T intersection
20.8	0.1	RT on Windys Dr
21.0	0.2	Yield and enter Hwy 91 over the dam
23.3	2.3	RT on Hwy 1310 Eisenhower Park
25.3	2.0	RT into park entrance
Follow leader through the park. We will circle through the park and leave by the same gate as we entered.		
30.9	5.6	RT on Eisenhower RD
32.0	1.1	RT on Eisenhower Rd
32.3	0.3	LFT on Hwy 84
32.4	0.1	RT on FM 406

**LONE STAR T'S
OKLAHOMA REVISITED -- 2006 SPRING TOUR
Day 3 – Sunday, May 6**

Lake Texoma Resort Park to Texas and Home

<u>Cumm Mileage</u>	<u>Interval Mileage</u>	
33.5	1.1	LFT on Preston Rd
35.8	2.3	Cross Hwy 120 on Preston Rd
40.4	4.6	Cross Hwy 691 Preston Becomes HWY 131
42.6	2.2	LFT on US 82 east
43.3	0.7	Follow US 82 service road to Golden Corral
		May want to gas up before we leave. 34 miles before next gas stop
43.4	0.1	Exit Golden Corral parking lot onto Loy Lake Road North
43.5	0.1	LFT on Buck Owens Freeway US 82 service rd. west Cross under US 75
44.1	0.6	Enter US 82 west
45.5	1.4	LFT on FM 1417 south
48.3	2.8	West on Hwy 56 BAD INTERSECTION Exit <u>left</u> across oncoming traffic. Be careful !!



**LONE STAR T'S
OKLAHOMA REVISITED -- 2006 SPRING TOUR
Day 3 – Sunday, May 6**

Lake Texoma Resort Park to Texas and Home

<u>Cumm Mileage</u>	<u>Interval Mileage</u>	
51.5	3.2	LFT on Hwy 289 south
77.2	25.7	PROSPER Gas stop at Exxon Station Eldorado Pkwy
82.3	5.1	RT to The Colony or Continue south 1.6 Miles to Main Street then LFT to Coit Rd & Plano/Richardson
87.1	4.8	LFT on FM 423
87.9	0.8	LFT on FM 423
92.7	4.8	LFT on N. Colony Blvd
92.7	0.0	LFT into city hall parking lot

Have A Safe Trip Home